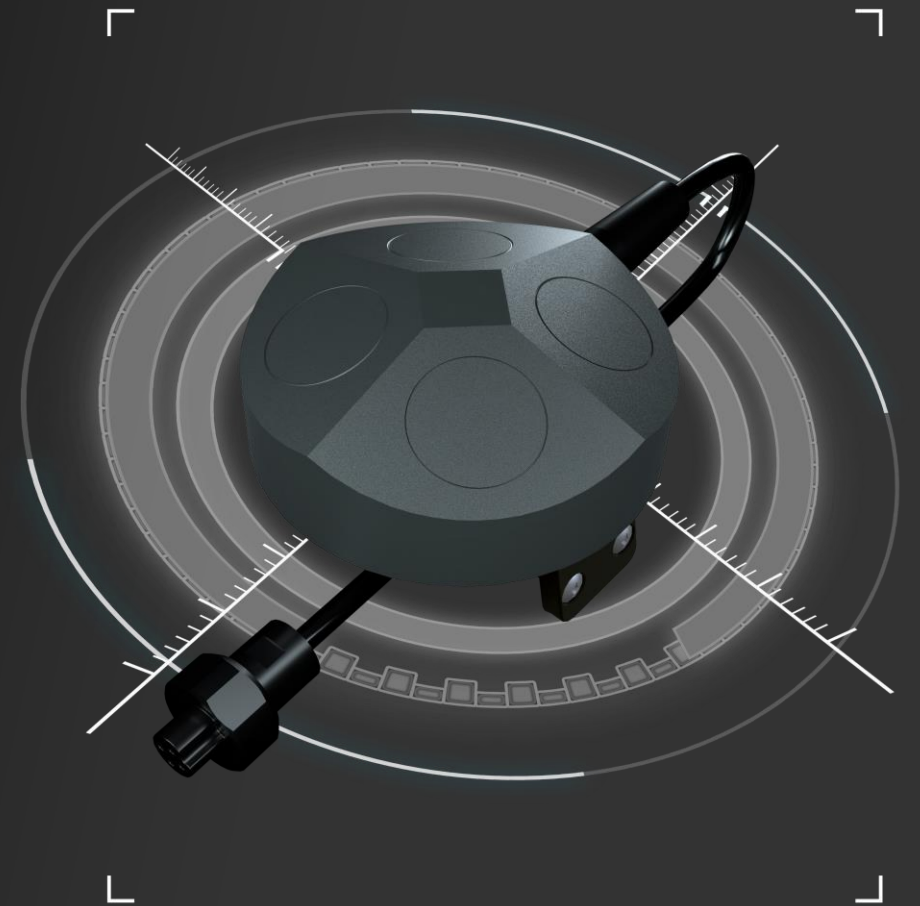


CHASING

CHASING Waterlinked DVL Kit

| CHASING M2/ M2 PRO/ M2 PRO MAX

www.chasing.com

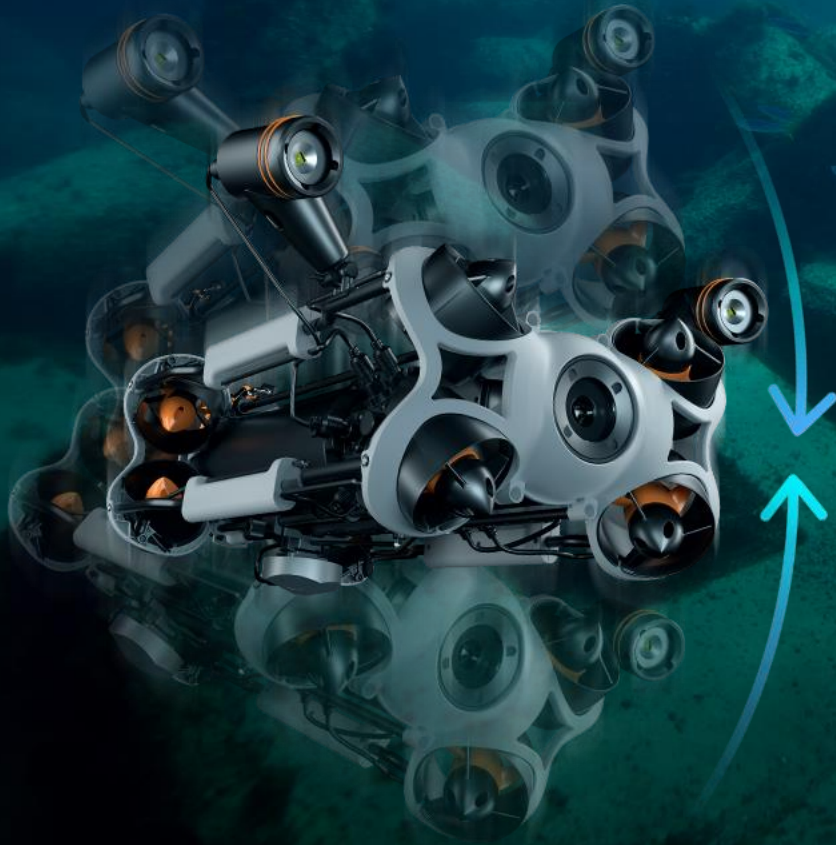


CHASING Waterlinked DVL Kit is a doppler velocity log accessory suite developed for CHASING M2, M2 PRO and M2 PRO MAX. Waterlinked DVL is the world's smallest DVL by far. It has attributes of high-performance, ultra-small 4 beam setup, Integrated AHRS /IMU, open interface protocol and low cost. ROVs that have mounted CHASING Waterlinked DVL kits can carry out missions without being disturbed by the complicated underwater environment, accurate display of operation speed, meet the needs of various applications. With the assistance of a DVL, ROVs can perform hovering, fixed-point location, and position correction, ensuring the ROV navigates accurately. CHASING Waterlinked DVL kit can meet the needs of advanced application scenarios, assisting the exploration of unknown waters. .



Disturbance Free, Improved Ability of Hovering and Fixed-Point Location

The CHASING Waterlinked DVL kit allows an ROV to accurately carry out hovering and fixed-point returns when deviation happens due to the disturbance of sea current or fish schools.



Deviation Avoider, Guard for Accurate Operation The CHASING Waterlinked DVL Kit Can Guarantee a More Accurate Underwater Operation.

It helps avoid position deviation, enhances operating accuracy and improves operating efficiency, ensuring a more stable and precise underwater footage.



Accurate Display of Operation Speed, Meet The Needs of Various Applications

The CHASING Waterlinked DVL kit allows an ROV constant speed operation, calculating the duration of the operation, estimating the movement speed of the detection object and meeting other diversified operational requirements.



Detection area (length) ÷ ROV speed estimate operation time

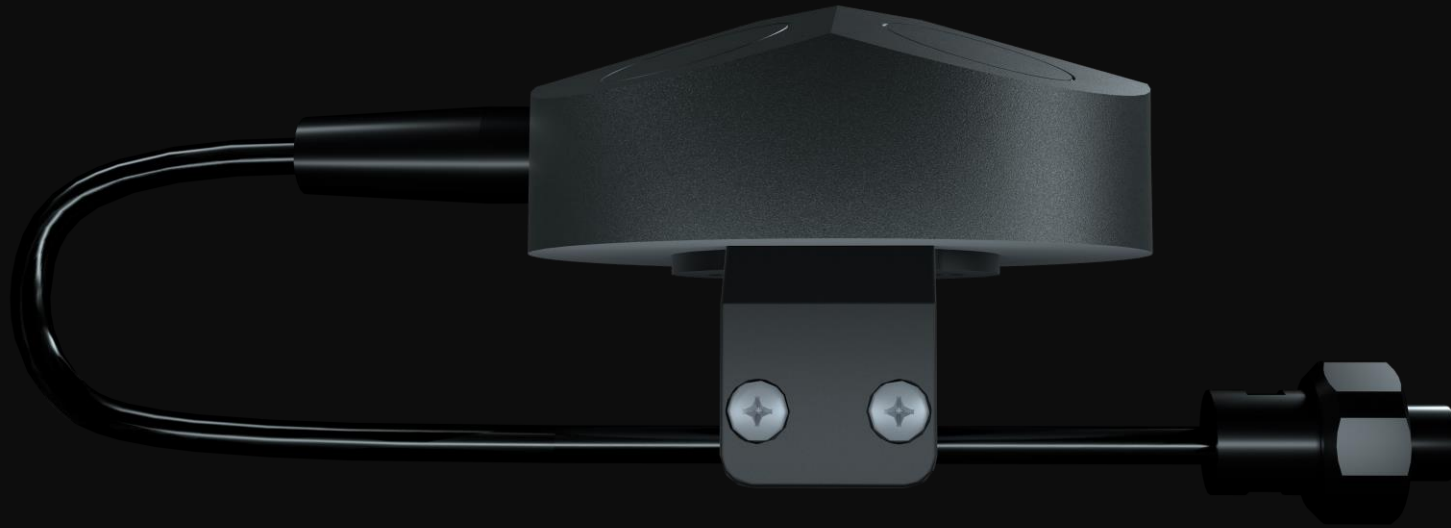
Specifications

CHASING Waterlinked DVL Kit		
Device	Device diameter	66MM
	Device height	25MM
	Device weight (in air)	250G
	Device weight (submerged)	185G
	Operating temperature	-5-60°C
	Pressure (resistance depth)	300M
Electrical Property / Interface	Input voltage	10-30 V
	Power consumption	0.25A, 12V
	Power-on current surge	1.25A, 12V
	Protocols	Water Linked API

Performance	Transducer frequency	1 MHz
	Transducer beam angle	22.5 Degrees
	Maximum velocity	3.75M/s
	Velocity resolution	0.1 MM/s
	Long-term accuracy	±1.01 % ±0.1 %

CHASING

CHASING Waterlinked DVL Kit



www.chasing.com