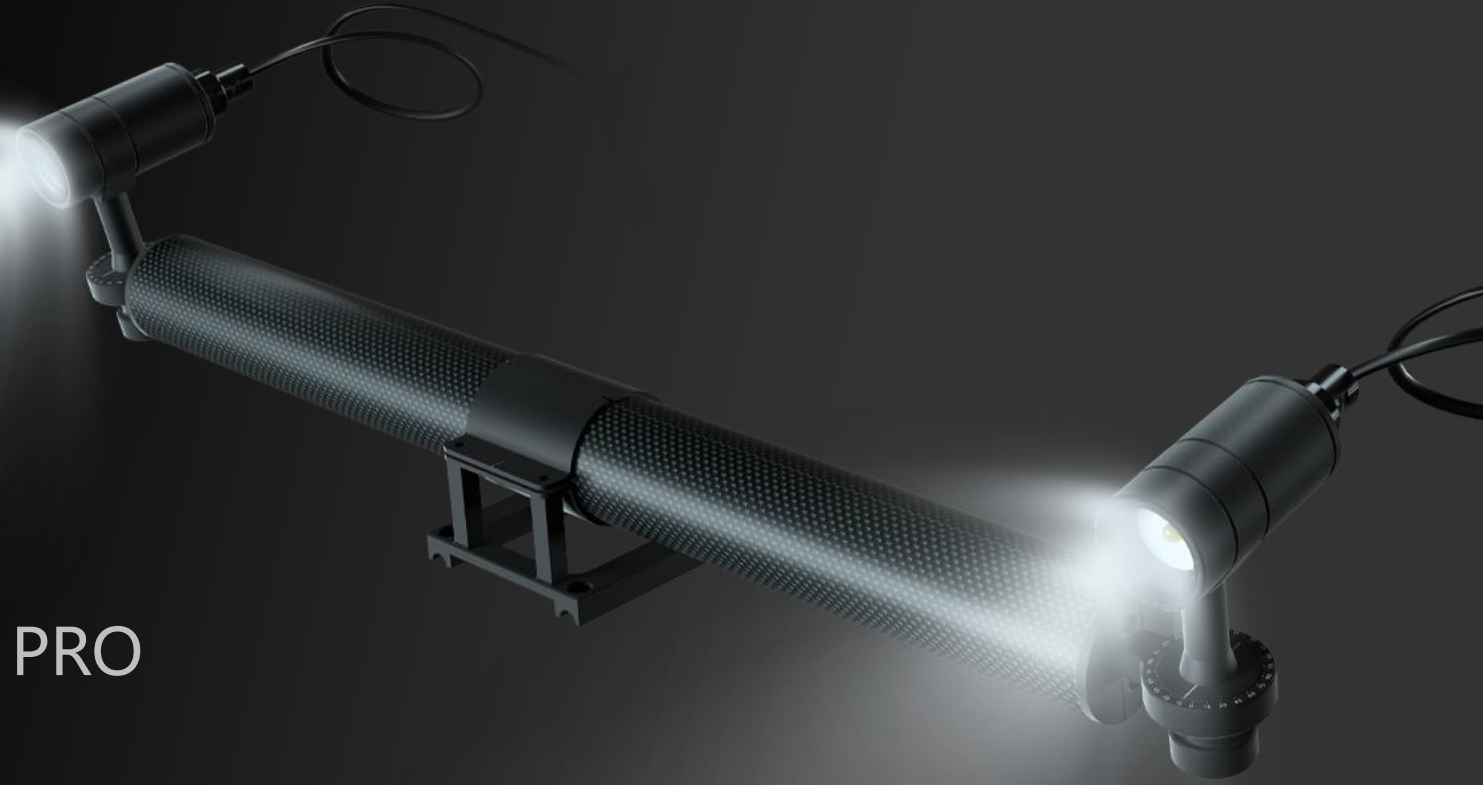


CHASING

CHASING FLOODLIGHT 2

| For CHASING M2 and M2 PRO

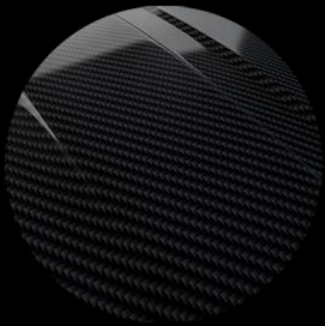
www.chasing.com



CHASING FLOODLIGHT 2 is an accessory specially engineered and developed for the CHASING M2 and M2 PRO.

The external illumination has adjustable beam angles ranging from 0° to 360°, significantly decreasing the visual interference of floating debris reflection. The unit is made of carbon fiber and aircraft-grade aluminium, which is lightweight and corrosion-resistant.

CHASING FLOODLIGHT 2 can significantly improve the quality of underwater images in scenarios where the natural illumination is weak. The use of CHASING FLOODLIGHT 2 can provide users with more illumination solutions for underwater explorations..



Carbon Fiber



Aircraft-Grade Aluminium



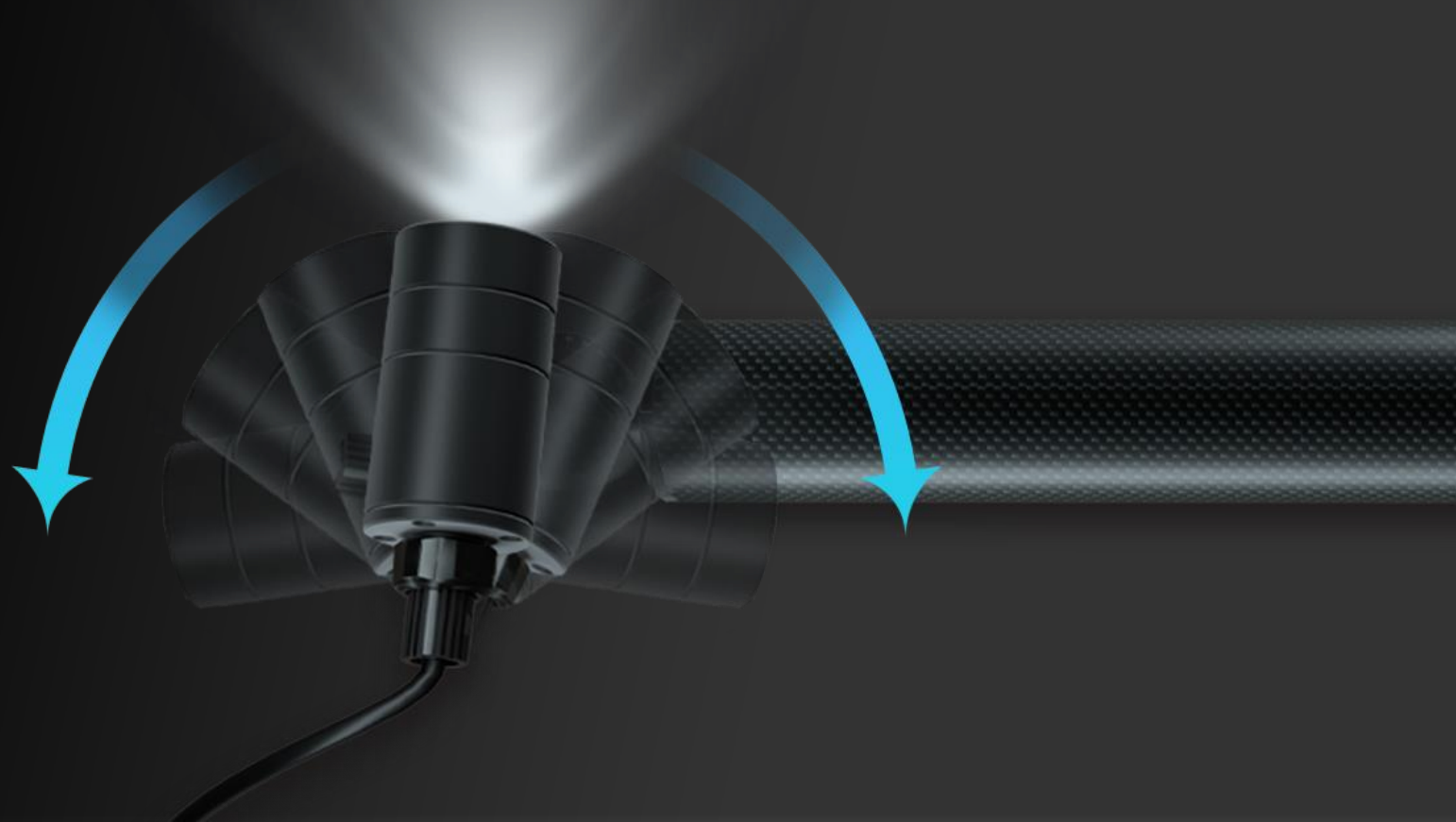
0° - 360° Adjustable Beam Angle

0° - 360° Adjustable BeamAngle

Dual lamp sources allow the adjustment from 0° to 360° horizontal beam angles, adjustment spacing is 15°, meeting various needs of underwater applications with maximized illumination area.

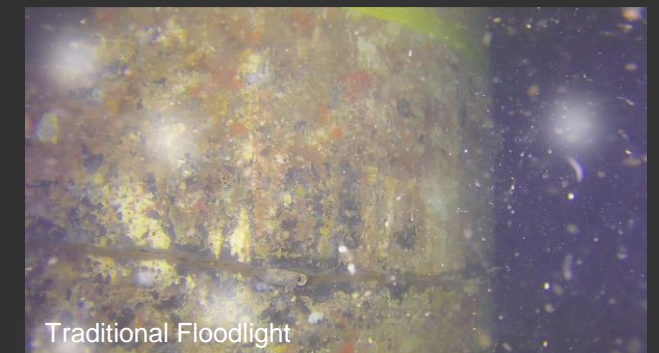
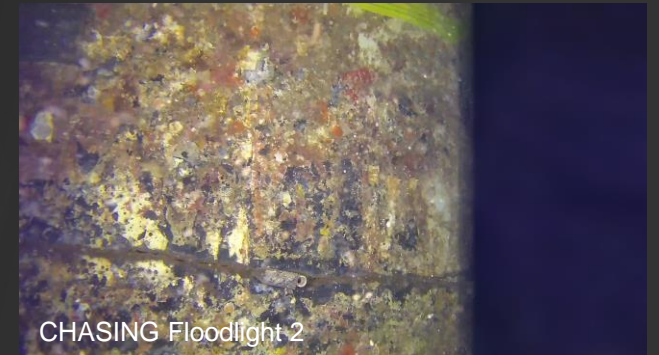


0° - 360° Adjustable BeamAngle



External Illumination, Minimized Visual Interference of Floating Debris

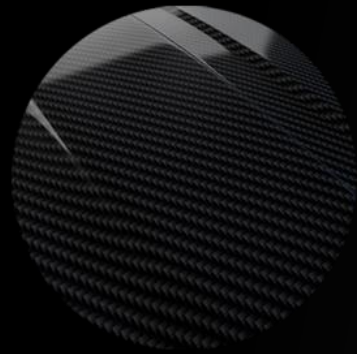
The external illumination can minimize the visual interference of floating debris and significantly increase the image quality.



Aircraft-Grade Aluminium & Carbon Fiber , Lightweight & Corrosion-Resistant

The HA III Military grade hard-anodized surface makes CHASING FLOODLIGHT 2 lightweight, corrosion-resistant and perfectly working at 150m deep water.

The slim-shaped unit only weighs 432g (15.3oz), which is easy to carry and store.



Carbon Fiber



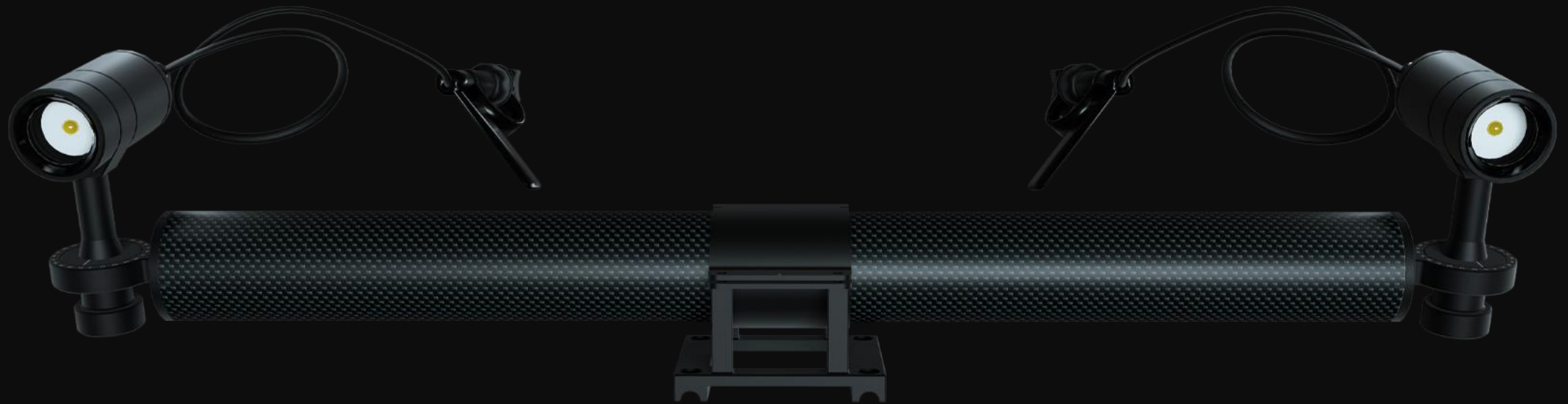
Aircraft-Grade Aluminium

Product parameter

CHASING FLOODLIGHT 2	
Dimensions(mm)	418mm
Weight	≈432g (15.3oz)
Angle of depression	-10°
Horizontal angle	360° adjustable
Pressure resistance depth	150m
Brightness	2*2000lm

CHASING

CHASING FLOODLIGHT 2



www.chasing.com