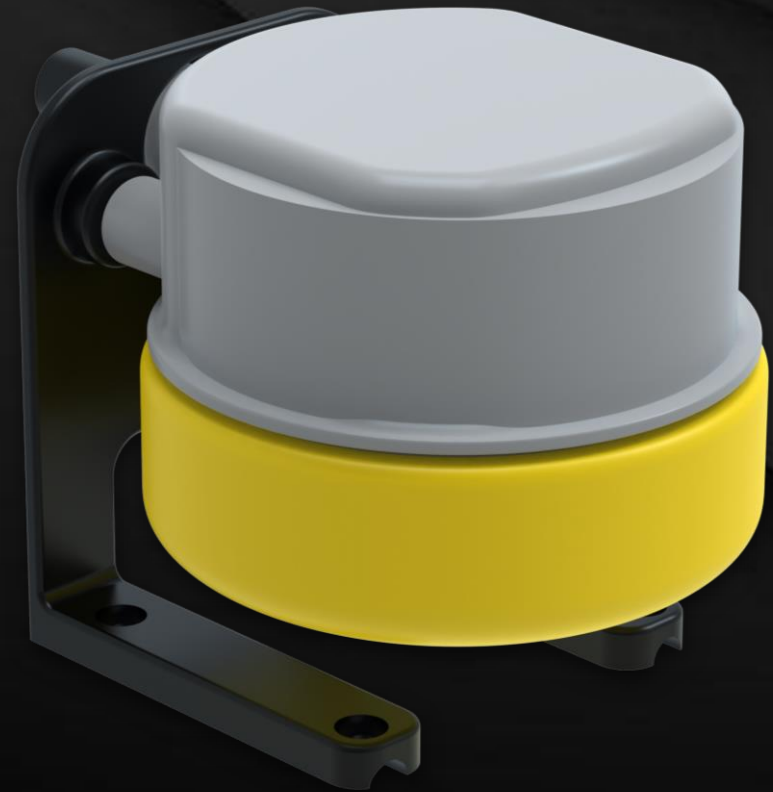


CHASING

CHASING DISTANCE LOCK SONAR

Accessory specially designed for use with
CHASING M2 and **CHASING M2 PRO ROV**.



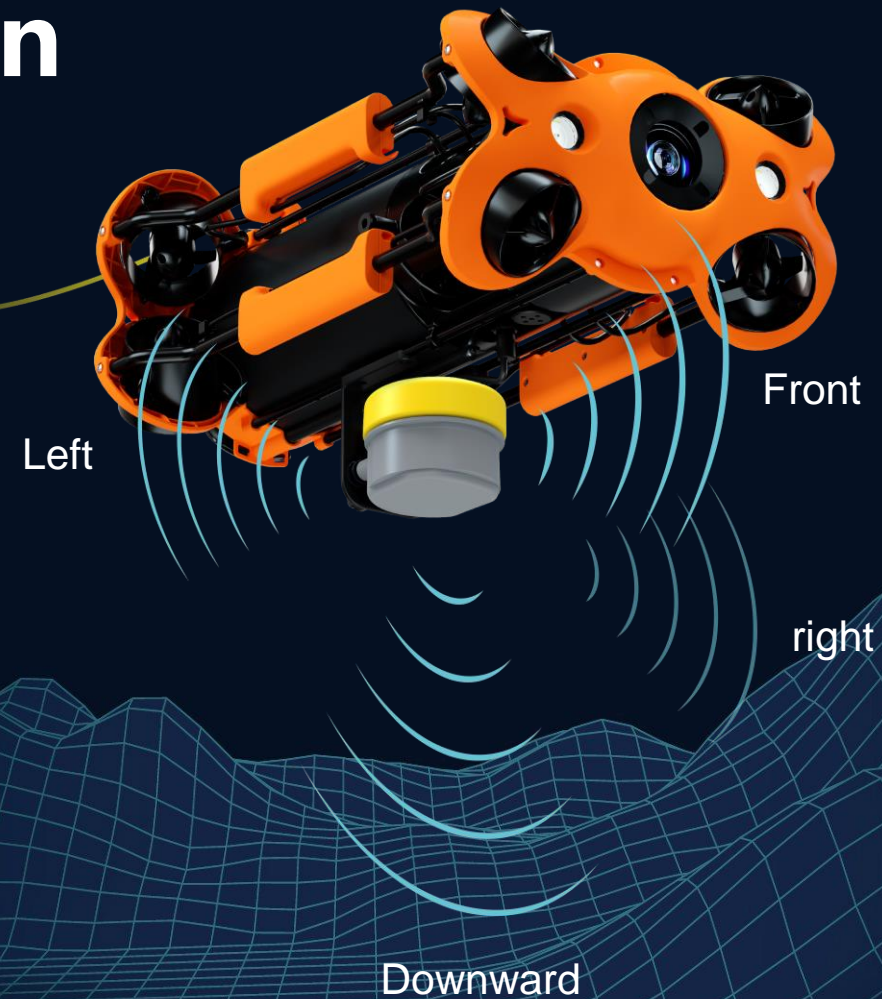
www.chasing.com

Distance Lock Sonar is an accessory specially designed for CHASING M2 and M2 PRO ROV. Sonar ranging can be performed in four directions: front, left, right, and downward of ROV. This enables the underwater collision prevention and ranging function, which reduce the difficulty of operation, and make various inspections more accurate and efficient.



One Sonar , Ranging in four directions

Sonar ranging can be performed in four directions: front, left, right, and downward of ROV. This enables the underwater collision prevention and ranging function.



Efficient ranging function, and Safe anti-collision prevention

Distance Lock Sonar can set the distance between ROV and the target on the APP. Whether it 's on a flat or a curved surface, collision prevention and ranging are available, which reduce the difficulty of operation, and make various inspections more accurate and efficient.



Product Parameter

CHASING DISTANCE LOCK SONAR	
Application	Underwater collision avoidance Underwater fixed range
Range	0.25m ~ 5m
Blind spot	Less than 20cm
Measurement accuracy	±25mm
Resolution	1mm
Launch angle	13° ± 2°, 26° between axis-1 and axis-2
Power supply	10.8VDC - 26.4VDC; (measurement range will vary depending on voltage)
Storage temperature	-20°C ~ 60°C(non-frozen environment)
Probe installation	Fixed installation
Protection level	IP68
Sonar installation base (default)	64×64.8×79mm
Sonar installation base (optional)	64×64.8×153mm
Sonar installation base weight (default)	54g
Sonar installation base weight (optional)	108g
Maximum diving depth	150m
Size of DISTANCE LOCK SONAR	Upper cover: 81.3 × 30mm; Housing: 79.3 × 55.9mm
Weight of DISTANCE LOCK SONAR	286±5g
Communication	TTL communication

CHASING

CHASING DISTANCE LOCK SONAR

